



Contents

3	Director's Report
12	Acquisitions
17	Works of art lent to public exhibitions
19	Long-term loans outside Government
25	Advisory Committee members
26	GAC staff

Director's Report



UK Prime Minister, Theresa May and Polish Prime Minister, Beata Szydlo at a reception at 10 Downing Street.
© Crown Copyright / photograph Tom Evans

Once more, the Government Art Collection (GAC) has witnessed, and responded to, an eventful year. Our primary activity has focused on selecting and installing a range of new displays for government buildings in the UK and at several diplomatic posts abroad. Just how well dispersed GAC works are in government buildings, is best illustrated by the impressive number of displays (approximately 121) we have installed in the UK and abroad in British Embassies and Residences, on nearly every continent, in this year alone. Across each site, art from the GAC plays a vital role in providing a cultural context against which ministerial negotiation and business activity happens; while also contributing to cultural diplomacy by making links between people, places and history around the world. This year we have welcomed a number of significant new acquisitions into the Collection, and, as ever, have enjoyed completing a range of projects in partnership with artists, museums, audiences, funders and higher education institutions.

Selected UK displays

Government reshuffles led to a number of ministerial visits to the GAC to select new works for offices. For the new UK regional display at 10 Downing Street, we arranged the loan of four paintings from the collections of UK museums: *Rock Garden, Cookham Dean* (1942) by Sir Stanley Spencer from Birmingham Museum and Art Gallery; Sir John Lavery's *Twilight, Lake of Geneva* (1924) from National Museums Northern Ireland; *Landscape in Kent* (1921) by David Jones from the National Museum of Wales; and *Roses* a (c.1920-25) painting by S. J. Peplow from the National Galleries of Scotland.

10 Downing Street

Portraits of notable Tudor figures were installed in the Pillared Room in 10 Downing Street. Featured in this display is a rare historical oil on oak panel portrait of Henry VIII, a significant acquisition, as it is the first historical portrait of Henry VIII in the GAC; a portrait of Sir Walter

Raleigh; and a portrait of William Shakespeare. Margaret Carpenter's elegant portrait of Ada King, Countess of Lovelace was re-displayed in its traditional location in the Pillared Room, following its return from loan to an exhibition at the Science Museum that celebrated the bicentenary of Lovelace's birth. Portraits of William Kent and Kenton Kouse, two architects closely associated with 10 Downing Street, were also reinstalled in the Terracotta Room.

Whitehall

A special display of works illustrating the history of the Whitehall Palace were installed in the Stone Hall, an area of the Cabinet Office that occupies the original foundations of the former Palace. Featured in the display are *The Old Palace of Whitehall* by Hendrick Danckerts; a marble bust of Oliver Cromwell by Joseph Wilton; a series of ten engravings of the House of Lords tapestries showing *The Defeat of the Spanish Armada* and a portrait of *King William III as Solomon* by Jan van Orley.



New Acquisition: a short history of the China trade
by Edmund de Waal
© Mike Bruce, courtesy of Edmund de Waal

Selected International Displays

GAC displays in British embassies and diplomatic buildings underpin their broader diplomatic function. This year some of the cities in which we installed new displays included Beijing, New York, Kabul, Tbilisi, Paris and Beirut. In August the Director visited the Ambassador's Residence in Beijing to oversee the installation of works, including two major additions to the Collection. On prominent view to visitors entering the reception hall is Isaac Julien's *No Moon Shining* (2010), an elegiac landscape photograph inspired by stories linking China's past and present that was gifted by the artist via the Outset/Government Art Collection Fund in 2015. Nearby in the same room is *a short history of the China trade* by Edmund de Waal, composed of a glass vitrine containing vessels and shards of porcelain, a material originating from, and long associated with, China. This specially commissioned work for display in Beijing was made possible

through the generous support of Rosamund Brown in memory of her husband, Charles H. Brown; The Rothschild Foundation; The Sackler Trust and with help from Madeleine Bessborough of the New Art Centre, Salisbury.

Following the arrival of a new Consul General in New York, we refreshed the display in the Residence with works by Cornelia Parker, Lucy Skaer and Paul Graham joining Andy Warhol's *Queen Elizabeth II of the United Kingdom* from his 1985 series, *Reigning Queens*; and *Map of an Englishman* 2004, the extraordinarily revelatory insight into artist Grayson Perry's mind resembling a mediaeval map. Modern prints by R. B. Kitaj, Joe Tilson and Michael Rothenstein were selected for installation in the British Ambassador's Residence in Kabul; while at the Ambassador's Residence in Beirut we installed *Blind* (2005), an unusual work consisting of a found painting and plastic by Alexandre Da Cunha; and a new display of prints by Patrick Heron.





New Acquisition: *Angelic Conversations* by Derek Jarman
 © The Estate of Derek Jarman Courtesy Wilkinson Gallery, London

Acquisitions

This year we continued our partnership with Outset, an independent international organisation founded in 2003 to support the production and promotion of new art within the public arena through private funding and philanthropy. The aim of the Outset/ Government Art Collection Fund is to add 12 works of art to the Collection over three years. This year's work gifted to the GAC was Anne Hardy's large-scale photograph, *Detached*, a mysterious scene depicting a workspace filled with objects, cables, diagrams and charts.

Other new works acquired for the Collection this year include *Angelic Conversations* (1982) by Derek Jarman, *Hendrick* (2016) a bold and quirky painting by Cornelia Baltes; five new paintings from 2016 by Mary Ramsden; and *Raft* (2016), a striking digital print and drawing gifted to the GAC by Cathy de Monchaux and her son Felix in memory of the MP Jo Cox, who was killed in 2016.

To mark the UK's participation at the Rio 2016 Olympic and Paralympic Games, we purchased *The Official Prints for Team GB at the Rio 2016 Olympic Games*, a portfolio of prints produced by eight artists and Counter Editions. Artists featured in the set include David Shrigley, Sir Howard Hodgkin and Sarah Jones.

Loans to public exhibitions

Committed to making GAC works of art as accessible as possible to public audiences, this year the GAC continued to loan works to temporary public exhibitions in the UK and around the world. Two important paintings of the 1930s by Paul Nash, *Event on the Downs* and *Nest of the Siren*, featured prominently in Tate Britain's major touring retrospective exhibition that opened in October. In Dublin, *High Treason, Court of Criminal Appeal: the Trial of Sir Roger Casement 1916*, a significant oil painting by Sir John Lavery, was loaned to the National Gallery of Ireland for its





A conservator working
at 10 Downing Street
on behalf of the GAC.
© Crown Copyright

exhibition, *Creating Histories: Stories of Ireland in Art*. Gillian Wearing's 1994 video, *Dancing in Peckham*, and her later photograph, *Me as an Artist in 1984* were loaned to *Behind Masks: Claude Cahun and Gillian Wearing*, an intriguing joint exhibition at the National Portrait Gallery. Other exhibitions loans this year also includes *On Board* (2010), a perceptively witty photograph by Mel Brimfield to *Double Act: Art and Comedy*, a group show at Bluecoat, Liverpool.

Barbara Hepworth's iconic sculpture of 1937, *Conoid, Sphere and Hollow III* travelled abroad to the Arp Museum Bahnhof Rolandseck in Germany, as part of the touring wing of Tate's Hepworth exhibition. In the USA, three historical works by William Hopkins, Charles Jervas and Valentine Green featured in *Enlightened Princesses: Carolina, Augusta, Charlotte and the Shaping of the Modern World*, an exhibition at the Yale Center for British Art, Newhaven.

Conservation

Our conservation programme continues both locally and internationally. Over 200 works received treatment this year. Among the works in the UK were: Charles Jervas' portrait of Caroline Wilhelmina of Brandenburg-Anspach for inclusion in the exhibition at the Yale Center for British Art, New Haven, USA - *Enlightened Princesses: Caroline, Augusta, Charlotte and the Shaping of the Modern World*; Ian Davenport's painting *Poured Lines: Light Red, Green, Blue, Yellow, Orange, Yellow, Red* which underwent conservation treatment following its return from the Organisation of Economic Co-operation and Development offices in Paris; and Victor Pasmore's *Development in Green & Indigo No 2* which returned to the UK after more than 20 years on view in Malta for exhibition in *Towards a New Reality* at the Djanogly Art Gallery, Nottingham. This painting is usually displayed at the Ambassador's Residence in Valletta, where Pasmore lived

and worked from the mid-1960s until his death. International conservation activities were undertaken in Santiago, New Delhi, Mumbai, Tehran and Cairo. Among the works treated were Jean Baptiste Borely's portrait of Charles Leonard Irby (1889) and David Austen's *Cairo Painting* (1998).

Framing

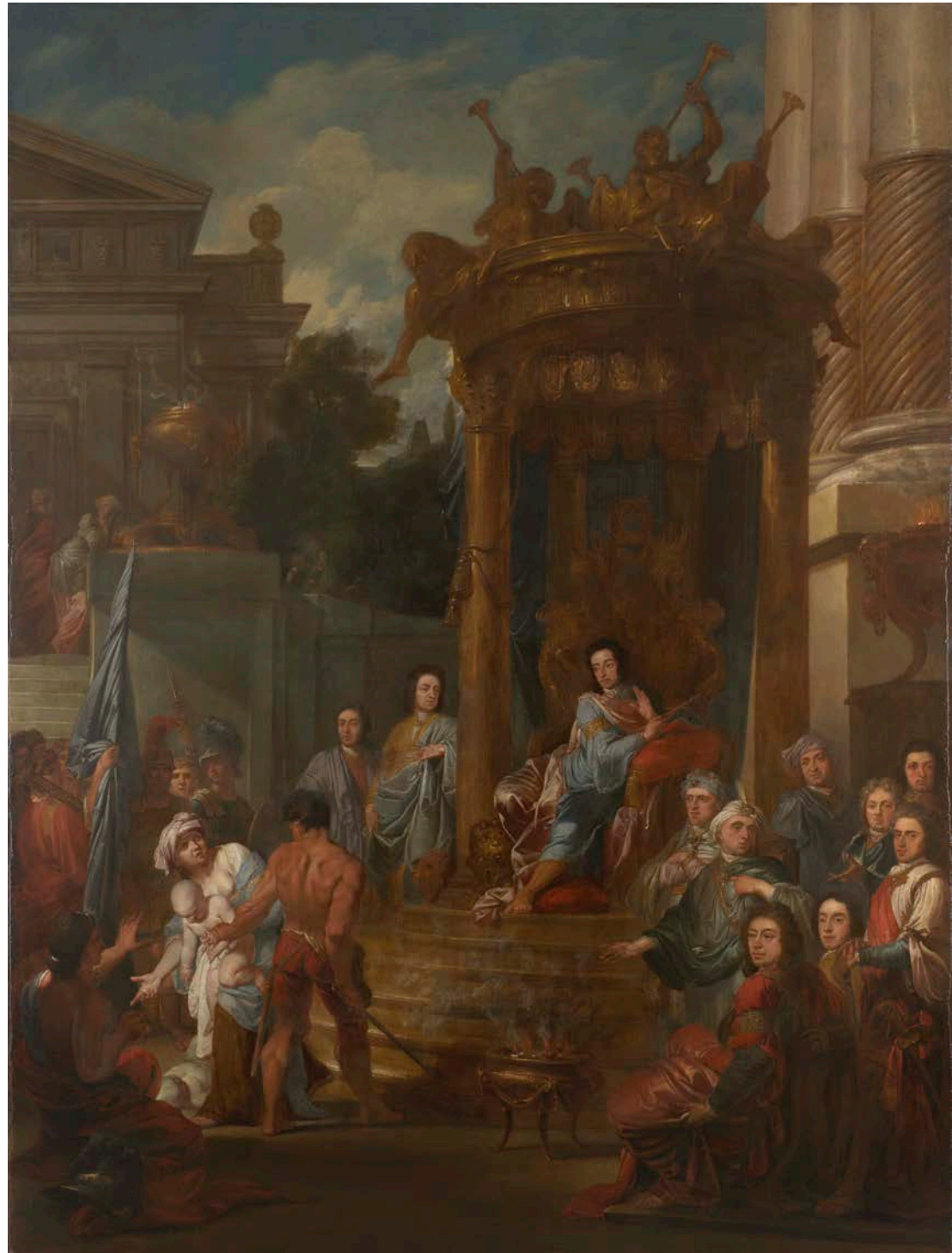
This year over 400 works were framed or glazed. The early portrait of *Henry VIII* by an anonymous artist of the Anglo-Flemish School received a new, reproduction Tudor, parcel gilt frame with a fretted, pierced and carved pattern. Other newly framed works include a series of 14 aquatints by Graham Sutherland; a series of 34 prints from *Folio*, the Shakespeare-inspired portfolio produced by the Royal College of Art in 2011; and *Mango*, a hand-coloured print from 1990-91 by the late Sir Howard Hodgkin, a gift from the artist with a dedication to the Deputy High Commission in Mumbai.

Research and Interpretation

The work of the GAC's research curators includes investigating issues as diverse as provenance, iconography and the attribution of works in the Collection. A painting of *Judith with the Head of Holofernes*, previously unattributed, has been identified as by the Austrian artist Heinrich Schwemmer. Other works on which we have focused this year include Jan van Orley's portrait of *William III as Solomon* as well as paintings by the 20th century women artists, Wendela Boreel (1895-1985) and Ithell Colquhoun (1906-1988). Over the last year we have been working towards developing a research project on the history and perception of the Government Art Collection in collaboration with the University of York.

Website

At the end of March 2017 the GAC website reached a significant milestone when we completed uploading data for all of the





Left to right: Bar Yerushalmi, Francesca Altamura and Tamar Clarke-Brown, students from the MFA Curating Programme
© Crown Copyright

remaining 2,750 works in the Collection not previously available on the website. This means we now provide basic data on all of the works in the Collection, increasing the public accessibility of the Collection.

Public engagement

Lunchtime tours at the GAC on weekdays continue to be popular alongside regular evening visits. We run three tours every month for organised groups as well as taking part in the annual London Open House and Museums at Night weekends. Some of the groups we have welcomed this year include British Museum Volunteers; PACE charity group; Lansdowne Art Club; The Roche Court Group; The Paul Mellon Centre staff and MA students from Oxford Brookes University. Exploring new partnerships with communities and organisations, we are aiming to encourage closer connections between the varied activities of the Collection and our current and future audiences.

Displays and Exhibitions

New displays of works drawn from the Collection were curated for visitors on tours in the GAC's gallery space. This year Roger Golding (Curator: Documentation), curated *Dark Vision*, an exhibition exploring sombre themes from war and violence to dreams and nightmares that featured works such as *Double Deathshead* by Jake and Dinos Chapman. This exhibition was followed by a display curated by Chantal Condron (Curator: Information & Research, Modern/Contemporary), which revisited the British Surrealism movement, 80 years after the opening of the first International Surrealist Exhibition at the New Burlington Galleries in London in 1936.

A further exhibition project *embassyHACK* was the result of a partnership between the GAC and Goldsmiths College. Tamar Clarke-Brown, Francesca Altamura and Bar Yerushalmi, students from the MFA Curating Programme, worked with the GAC team led

by Adrian George, Deputy Director/Senior Curator, learning at first-hand about the processes involved in planning, curating and delivering an exhibition. The final exhibition, *embassyHACK*, held at the GAC's gallery space between April and May, recreated a hybrid version of an 'Ambassador's Room'. The show included works from the Collection as well as commissioned works by contemporary London-based artists including Bishi and Mathew Hardern, Guy Bar Amotz, Juan Covelli and Hannah Honeywill and a live performance by Louise Ashcroft. The students offered guided tours for the visitors during the exhibition.

Talks

Throughout the year, staff deliver occasional talks and presentations about the work of the GAC at a variety of institutions and organisations. This year, we have participated in events at the Institute of Historical Research, London South Bank University, the Tower of London, the Foreign and Commonwealth

A GAC Curator discussing a work of art during a public tour of the GAC HQ, London.
© Crown Copyright



Office and the Art Fund. Presentations by our research curators included Conversation Pieces - Curating the Embassy. Works on Display from the Government Art Collection by Laura Popoviciu at the Institute of Historical Research in October; and in November, Peas Poets Paris Paolozzi a public lecture by Chantal Condron at the Fry Art Gallery, Saffron Walden.

Open House London

As September approaches each year, we look forward to participating in Open House London, a popular and long-established event that encourages many buildings and organisations across the capital, normally with restricted access, to open their doors to visitors. This year, we led seven daily tours of the GAC over the weekend to almost 300 visitors. We also collaborated with the Foreign and Commonwealth Office (FCO) to produce The Art of Diplomacy, a short video to promote awareness of GAC works that are displayed inside the FCO's main site on Whitehall.

Looking forward

We are very excited to stage An Eyeful of Wry, a future exhibition at the Brynmor Jones Library gallery at the University of Hull during Season Four: Tell The World of Hull's UK City of Culture 2017. Drawing on comic notions and provocative ideas, An Eyeful of Wry, which opens this autumn, will present a range of works from the Collection, from satirical historical prints by James Gillray, to a new commissioned work by Peter Liversidge. Collaborating with a Hull-based education agency, we plan to create an engaging programme of exhibition-related activities for young and adult visitors. Further ahead, we are continuing to work towards developing further access to the Collection and the prospect of moving to new accommodation in 2019 will allow for a small display space with public access for the first time in the Collection's history.

Penny Johnson, Director

Measurements are in centimetres, height precedes width. Prices include VAT where applicable.

Cornelia Baltes (born 1978)

18695 **Hendrik** 2016, acrylic on canvas, 160.5 x 120.5
purchased from Limoncello, August 2016, at £6,825.11

Jeffery Camp (born 1923)

18698 **Pier Pop Hop** 1960, oil on hardboard, 48.2 x 63.5
purchased from Art Space Gallery, August 2016, at £5,400

Phil Collins (born 1970)

18704 **Bethlehem #1** 2003, Diasec mounted Lightjet print, 119.7 x 152.2, edition number 4/4
purchased from Christie's, 4 October 2016, at £2,156

Cathy de Monchaux (born 1960)

18700 **Raft** 2016, giclée print hand edited with pencil, graphite, carbon and rottenstone, mounted on aluminium, 47 x 122, edition number 1/15
gifted in memory of Jo Cox by Cathy de Monchaux and her son Felix, 2016

Edmund de Waal (born 1964)

18690 **a short history of the China trade** 2016, 58 porcelain vessels, some with gilding, and 4 gilded porcelain shards in a composite vitrine, 170 x 120 x 14
commissioned by the Government Art Collection with the generous support of Rosamund Brown in memory of her husband, Charles H Brown; The Rothschild Foundation; The Sackler Trust and with assistance from Madeleine Bessborough, New Art Centre, 2016, at £126,000 (GAC contribution £81,000)

Jeremy Deller (born 1966)

18715 **Edition for we're here because we're here** 2016, printed cards mounted on conservation board, 35.5 x 41.5, edition number 18/100
purchased from the Imperial War Museum, January 2017, at £400

Simon Faithfull (born 1966)

18697/1 **0°00 Navigation part I - A Journey Across England** 2008, video, playing time 50 minutes, edition number 2/5
purchased from the artist, September 2016, at £9,180

Maria Farrar (born 1988)

18702 **Cat** 2016, oil on canvas, 122 x 152.5
purchased from Supplement Gallery, November 2016, at £2,250

Anne Hardy (born 1970)

18696 **Detached** 2009, Diasec mounted c-type print, 123.5 x 152.7, edition number 3/5
presented by the artist via the Outset/Government Art Collection Fund, July 2016

Sir Howard Hodgkin (1932-2017)

18716 **Mango** 1990-1991, intaglio print with carborundum from one aluminium plate with hand-colouring in veronese green egg tempera, 76 x 110.5, working proof
presented by Sir Howard Hodgkin, March 2017

Derek Jarman (1942-1994)

18699 **Angelic Conversations** 1982, oil on canvas, 71 x 51
purchased from Wilkinson Gallery, September 2016, at £16,320

Edward Middleditch (1923-1987)

18706 **The Rose Bower** c.1958-1959, oil on canvas, 126.5 x 101.5
transferred from OFCOM, November 2016

Victoria Morton (born 1971)

18689 **Untitled** 2016, oil on canvas, 131 x 100.8
purchased from The Modern Institute, July 2016, at £17,280

Vicken Parsons (born 1957)

18691 **Untitled** 2015, oil on wood, 31 x 34
purchased from Alan Cristea Gallery, July 2016, at £7,020

18692 **Untitled** 2016, oil on wood, 32 x 40
purchased from Alan Cristea Gallery, July 2016, at £7,560

18693 **Untitled** 2016, oil on wood, 31.2 x 40
purchased from Alan Cristea Gallery, July 2016, at £7,560

Mary Ramsden (born 1984)

18694/1 **Wine Dark Sea (1)** 2016, oil on MDF panel, 40 x 30

18694/2 **Wine Dark Sea (2)** 2016, oil on MDF panel, 40 x 30

18694/3 **Wine Dark Sea (3)** 2016, acrylic on canvas, 168 x 112

18694/4 **Wine Dark Sea (4)** 2016, oil on MDF panel, 76 x 61

18694/5 **Wine Dark Sea (5)** 2016, oil on canvas, 30.2 x 20.5
purchased from Pilar Corrias, July 2016, at £20,640

Ivan Seal (born 1973)

18714 **Duchess** 2015, oil on canvas, 112.4 x 90.5
purchased from Carl Freedman Gallery, January 2017, at £9,180

David Shrigley (born 1968)

18707 **Untitled (Bad Art)** 2014, ink on paper, 42 x 29.6

18708 **Untitled (I Don't Have a Girlfriend)** 2014, ink on paper, 42 x 29.6

18709 **Untitled (The Race. Eventually You Must Join In)** 2014, ink on paper, 42 x 29.6

18710 **Untitled (We Are All Walking Tightropes. Every Single One of Us)** 2014, ink on paper, 42 x 29.6

18711 **Untitled (I Hate Giving Speeches)** 2014, ink on paper, 42 x 29.6

18712 **Untitled (Get Off the Wing You Idiot)** 2014, ink on paper, 42 x 29.6
purchased from Stephen Friedman Gallery, December 2016, at £2,346 each

D J Simpson (born 1966)

18703 **O's** 2000, aluminium laminate on MDF, 169.5 x 169.5
purchased from Christie's, 4 October 2016, at £1,320

Stewy

18701 **Mary Wollstonecraft** 2015, screenprint, 70 x 50, edition number 15/28
presented by Mary on the Green Campaign, October 2016

Caragh Thuring (born 1972)

18713 **He who drinks the juice of the stone** 2016, oil on cotton woven with Trevira CS, 190.2 x 247.8
purchased from Thomas Dane Gallery, May 2017, at £28,500

Wolfgang Tillmans (born 1968)

18713 **in the back** 2010, colour photograph, inkjet print mounted on Dibond, 135 x 202
purchased from Herald St., January 2017, at £66,114.72

Mixed portfolios:**The Official Prints for Team GB at the Rio 2016 Olympic Games** 2016

portfolio of 8 prints by various artists, published by Counter Editions, edition number 10/300 purchased from Counter Editions, July 2016, at £4,000

Tracey Emin (born 1963)

18688/1 **True Love Always Wins**, lithograph

Anne Hardy (born 1970)

18688/2 **Reflection**, inkjet print

Sir Howard Hodgkin (1932-2017)

18688/3 **The Road to Rio**, screenprint

Sarah Jones (born 1959)

18688/4 **Cabinet (Spiral)**, inkjet print

Eddie Peake (born 1981)

18688/5 **Sweat**, screenprint

David Shrigley (born 1968)

18688/6 **Life is Fantastic**, screenprint

Benjamin Senior (born 1982)

18688/7 **Stroke Tempo**, lithograph

Sam Taylor-Johnson (born 1967)

18688/8 **Wanderer Above The Sea Of Dreams**, screenprint

Works previously uninventoried:**Unknown artist** 18th century

18705 **Queen Anne Coat of Arms**, oil on canvas, 181 x 148.5
old Cabinet Office acquisition, date unknown

The following works were accessioned as part of a project to rationalise the care of works of art in former Inland Revenue buildings, in partnership with HM Revenue and Customs, due to their departure from Somerset House in 2012

Ralph Agas (c.1540-1621)

10383 **A View of London about the Year 1560**, engraving from The History of London, published 1756 and 1775, 41.5 x 53.5

Joseph Brown (1809-1887) after **Pierre Mignard** (1612-1695)

10379 **Henrietta Anne, Duchess of Orleans (1644-70) Daughter of King Charles I**, engraving, published 1841, 41.2 x 30.6

Samuel Buck (1696-1779) and **Nathaniel Buck** (fl. 1724-1759)

10281 **London and Westminster 3: Somerset House to Bridewell**, engraving, published 11 September 1749, 37.5 x 87

Colen Campbell (1676-1729)

0/166 **Elevation of the Great Gallery in Somerset House to the River**, engraving from Vitruvius Britannicus, vol. I, published 1715

Thomas Cook (1744-1814) after **William Hogarth** (1697-1764)

10320 **Royal Masquerade, Somerset House**, engraving published 1841, 45.8 x 57

George Cooke (1781-1834) after **Edward B Blore** (1789-1879)

0/169 **Works of the Strand Bridge (taken in the Year 1815)**, published 1 January 1817, engraving, 22.8 x 32.1

Isaac Robert Cruikshank (1789-1856) and **George Cruikshank** (1792-1878)

10227 **A Shilling Well Laid Out. Tom and Jerry at the Exhibition of Pictures at the Royal Academy**, coloured aquatint from Life in London, published 1 July 1821

John Faber I (c.1660-1721) after **unknown artist**, 16th century

10378 **Portrait of a Young Woman said to be Elizabeth I (1533-1603)**, mezzotint, published 1742, 51.3 x 36.4

after **William Faithorne the Elder** (c.1616-1691)

10247 **A Portion of Faithorne's Map of London and Westminster (1658) Comprising the Area Devastated by the Great Fire of 1666**, engraving, 27.2 x 55.6

James Gillray (1756-1815)

10311 **Titianus Redivivus; - or - The Seven-Wise-Men Consulting the New Venetian Oracle**, etching and aquatint, published 2 November 1797, 59.5 x 45

Wenceslaus Hollar (1607-1677)

10389 **The Prospect of London and Westminster taken from Lambeth**, etching (four joined sheets), published c.1697, 37.5 x 161.2

Pieter de Jode I (1570-1634)

0/206B **Anne of Denmark (1574-1619) Queen of England, Scotland, and Ireland, consort of James VI and I**, engraving

Nicolas de Larmessin II (c.1640-1745)

0/208 **Catherine of Braganza (1638-1705) Queen of King Charles II**, engraving, 21.8 x 16

Henry Melville (active 1826-1844) after **Frederick William Fairholt** (1814-1866)

0/194 **Somerset House. Meeting of the Royal Society, engraving from London interiors: A Grand National Exhibition**, published 1841-1844

Joannes Meyssens (1612-1670)

0/206A **Anne of Denmark (1574-1619) Queen of England, Scotland, and Ireland, consort of James VI and I**, engraving, 17.2 x 11.5

John Pye the Elder (born 1746) after **Thomas Wood** (active 1750-1800)

10388 **South View of the City of London and part of Southwark as it appeared about the Year 1599**, etching, published 7 November 1771, 35.5 x 56.5

Johann Heinrich Ramberg (1763-1840) after **Pietro Antonio Martini** (1739-1797)

10219 **Portraits of Their Majesties and the Royal Family Viewing the Exhibition of the Royal Academy, 1789**, etching, published 6 March 1789

Simon Francois Ravenet (1706-1774) after **John Hamilton Mortimer** (1740-1779)

10322 **An Academy**, engraving from Sculptura Britannica, published 1 November 1771

Thomas Rowlandson (1756-1827)

15585 **A Life Class at the Royal Academy, Somerset House, London**, etching, published 1811

Thomas Sandby (1721-1798)

10210 **View of London from Old Somerset House Garden** c.1760, watercolour on paper, 32.50 x 23.50

10211 **Somerset House, View of Front Elevation** c.1760, watercolour with pen and ink, 34.50 x 44.70

George Johann Scharf (1788-1860)

10332 **Lecture on Sculpture by Richard Westmacott at the Royal Academy, Somerset House, in 1830**, two-tone lithograph, published 1850, 23 x 32

Joseph Constantine Stadler (1755-1828) after **Thomas Hosmer Shepherd** (1791-1864)

0/176 **A South View of Somerset House from Waterloo Bridge published 11 April 1817**, coloured aquatint

Unknown artist, 17th century

0/207 **Henrietta Maria (1609-69) Queen of Charles I**, engraving, 22.2 x 16.4

Unknown artist, 17th century

10373 **The Execution of King Charles I outside the Banqueting House, Whitehall, 30 January 1649**, woodcut, 11.5 x 13.5

Unknown artist, German 17th century

10374 **The Execution of King Charles I outside the Banqueting House, Whitehall, 30 January 1649**, woodcut, published c.1690-1700, 9 x 10

Unknown artist, British 18th century

0/140 **La Ville de Westminster / A Prospect of Westminster** c.1720, engraving

Unknown artist, British 19th century

10357 **The Grand Opening of Waterloo Bridge**, woodcut, published 4 July 1817, 45.7 x 58.5

Unknown artist, British 19th century

10370 **New London Bridge Opened by King William IV and Queen Adelaide, 1 August 1831**, coloured engraving, published c.1831, 46.8 x 37.7

Robert White (1645-1703)

0/205 **Edward Seymour, 1st Duke of Somerset (c.1500-1552) soldier and Lord Protector of King Edward VI**, engraving, 31.7 x 19

Works of art lent to public exhibitions

17

Double Act: Art & Comedy

Bluecoat, Liverpool, 8 April 2016 – 19 June 2016

18386 Mel Brimfield, **On Board**, photograph

Prunella Clough: Unknown Countries

Jerwood Gallery, Hastings, 23 April 2016 – 10 July 2016

3896 Prunella Clough, **Trawl-net**, oil painting

Barbara Hepworth

Arp Museum Bahnhof Rolandseck, Remagen, 22 May 2016 – 28 August 2016

7368 Dame Barbara Hepworth, **Conoid, Sphere and Hollow III**, marble sculpture

Christopher Wood

Pallant House Gallery, Chichester, 2 July 2016 – 2 October 2016

3814 Christopher Wood, **Bridge over the Seine**, oil painting

Edward Bawden, The Early Watercolours

Fry Gallery, Saffron Walden, 30 July 2016 – 30 October 2016

5639 Edward Bawden, **Now with religious awe the farewell light, Blends with the solemn colouring of the night**, watercolour

Kenneth Armitage Centenary Exhibition

Victoria Art Gallery, Bath, 10 September 2016 – 27 November 2016

9685 Kenneth Armitage, **Two Chairs and a Stool Painting**, oil painting

16446/C Kenneth Armitage, **Richmond Park: Two Trees with White Trunks**, drawing

16447/C Kenneth Armitage, **Richmond Park: Five Trees, Grey Sky**, drawing

Euan Uglow / Sargy Mann

The Collection, Lincoln, 24 September 2016 – 8 January 2017

16470/C Euan Uglow, **North Cyprus: Study for a History Painting**, oil painting

Paul Nash

Tate Britain, London, 26 October 2016 – 5 March 2017

Sainsbury Centre for Visual Art, Norwich, 7 April 2017 – 20 August 2017

Laing Art Gallery, Newcastle, 9 September 2017 – 31 January 2018

6828 Paul Nash, **Nest of the Siren**, oil painting

8536 Paul Nash, **Event on the Downs**, oil painting

Creating History: Stories of Ireland in Art

National Gallery of Ireland, Dublin, 8 October 2016 – 15 January 2017

0/128 Sir John Lavery, **High Treason, Court of Criminal Appeal: the Trial of Sir Roger Casement 1916**, oil painting

The Subjective Factor: The Art of Victor Pasmore

Djanogly Art Gallery, Nottingham, 26 November 2016 – 19 February 2017

Pallant House Gallery, Chichester, 11 March 2017 – 11 June 2017

13121 Victor Pasmore, **Development in Green & Indigo No 2**, oil painting

Joan Eardley

Scottish National Gallery of Modern Art, Edinburgh, 1 December 2016 – 1 March 2017

1842 Joan Eardley, **A Carter and his Horse Painting**, oil painting

Enlightened Princesses: Caroline, Augusta, Charlotte and the Shaping of the Modern World

Yale Centre for British Art, New Haven, 3 February 2017 – 30 April 2017

3810 William Hopkins, **Lady Charlotte Finch (née Fermor) (1725-1813) Governess to the Children of King George III**, oil painting

0/83 Charles Jervas, **Caroline Wilhelmina of Brandenburg-Anspach (1683-1737) Consort of King George II**, oil painting

10048 Benjamin West, Valentine Green, **Charlotte Sophia of Mecklenburg-Strelitz (1744-1818) Queen of King George III, and the Princess Royal**, mezzotint

Eduardo Paolozzi

Whitechapel Gallery, London, 14 February 2017 – 15 May 2017

6678 Sir Eduardo Paolozzi, **Untitled**, brass sculpture

5641 Sir Eduardo Paolozzi, **Fun Fair**, mixed media collage

Behind the Mask: Claude Cahun and Gillian Wearing

National Portrait Gallery, London, 9 March 2017 – 29 May 2017

17286/1 Gillian Wearing, **Dancing in Peckham**, video

18616 Gillian Wearing, **Me as an artist in 1984**, photograph

In Focus: Eileen Agar

Jerwood Gallery, Hastings, 15 March 2017 – 5 June 2017

15235 Eileen Agar, **Bride of the Sea**, acrylic painting

Camden Town in the Blackdown Hills

Museum of Somerset, Taunton, 25 March 2017 – 8 July 2017

5219 Spencer Frederick Gore, **Somerset Landscape**, oil painting

British Library, London: India Office Library

14528 **Frances Johnson (née Croke, the Begum Johnson) (1728-1812) hostess** painting by Thomas Hickey

European Commission Offices (Berlaymont), Brussels, Belgium

- 17885/1 **untitled [flashlight and shoe]** 2004 screenprint by Michael Craig-Martin
17885/2 **untitled [mobile phone and trombone]** 2004 screenprint by Michael Craig-Martin
17885/3 **untitled [table and tumbler]** 2004 screenprint by Michael Craig-Martin
17885/4 **untitled [camera and safety-pin]** 2004 screenprint by Michael Craig-Martin
17885/5 **untitled [sunglasses and espresso pot]** 2004 screenprint by Michael Craig-Martin
17885/6 **untitled [desk lamp and cane chair]** 2004 screenprint by Michael Craig-Martin
17885/7 **untitled [personal digital assistant and knife]** 2004 screenprint by Michael Craig-Martin
17885/8 **untitled [lap-top computer and book]** 2004 screenprint by Michael Craig-Martin
17885/9 **untitled [swivel chair and dividers]** 2004 screenprint by Michael Craig-Martin
17885/10 **untitled [trainer and garden fork]** 2004 screenprint by Michael Craig-Martin
17885/11 **untitled [wrist-watch and handcuffs]** 2004 screenprint by Michael Craig-Martin
17885/12 **untitled [swivel armchair and sardine tin]** 2004 by Michael Craig-Martin
18064 **Devotional II** screenprint by Sonia Boyce

European Parliament Information Office, London

18292 **Sir Winston Leonard Spencer Churchill (1874-1965) Prime Minister** 1941 photolithograph by Yousuf Karsh

Fort St. George Museum, Chennai, India

- 12450 **King George V (1865-1936) Reigned 1910-36** painting by William Joseph Carroll
12451 **Mary of Teck (1867-1953) Queen Consort of King George V** painting by William Joseph Carroll
12452 **Queen Victoria (1819-1901) Reigned 1837-1901** painting by Franz Xaver Winterhalter

Historic Royal Palaces: Banqueting House, Whitehall

- 4594 **King Charles I (1600-1649) reigned 1625-1649** 1629 painting by Daniel Mytens
11493 **Inigo Jones (1573-1652) Architect** plaster bust after John Michael Rysbrack
15537 **His Majesty's Royal Banqueting House of Whitehal** 1713 print by H Terasson

Historic Royal Palaces: Hampton Court Palace

- 14848 **Scale Copy, East Wall, King's Staircase, Hampton Court (after Antonio Verrio)** painting by Alistair N Stewart
14950 **Scale Copy, Queen's Drawing Room, Hampton Court, Ceiling** painting by William J MacLeod
14951 **Scale Copy, Queen's Drawing Room, Hampton Court, Chimney Wall** painting by Vivian Charles Hardingham
14952 **Scale Copy, Queen's Drawing Room, Hampton Court, Side Wall** painting by Vivian Charles Hardingham
14953 **Scale Copy, Queen's Drawing Room, Hampton Court** painting by Vivian Charles Hardingham

Historic Royal Palaces: Hillsborough Castle, Belfast

- 21 **Sir Peter Paul Rubens (1577-1640) Artist and Diplomat: Self Portrait** painting after Peter Paul Rubens
3409 **Farmyard Birds in a Landscape** painting by unknown 18th century
4719 **H M Queen Elizabeth II (b1926)** photograph by Dorothy Wilding
4720 **Coronation Ceremony of King George VI in the Abbey** reproduction by Frank Owen Salisbury

- 4721 **Thanksgiving Service of the Heart of the Empire** reproduction by Frank Owen Salisbury
- 4725 **Fete at Hillsborough Fort** 1837 engraving by John R Reilly
- 4725/1 **Fete and Dinner at Old Castle, Hillsborough** 1837 coloured engraving by John R Reilly
- 4726 **Small Park, Hillsborough** engraving by Roland Ingleby-Smith
- 4727 **Irish Sea and St George's Channel** reproduction by R Elstrack Aft.B Boazio
- 4728 **James Albert Edward Hamilton, 3rd Duke of Abercorn (1869-1953) First Governor of Northern Ireland** painting after John Archibald Alexander Berrie
- 4729 **William Spencer Leveson-Gower, 4th Earl Granville (1880-1953) Vice-Admiral** painting by Arthur R Middleton Todd
- 4730 **Coronation Procession of King George VI and Queen Elizabeth** reproduction by Frank Owen Salisbury
- 5228 **John de Vere Loder, 2nd Baron Wakehurst (1895-1970) Governor of Northern Ireland** painting by Derek Hill
- 5945 **Jamaica Fruit** painting by Jessica Lee
- 6709 **Amazilia Ocai (Humming Bird Series)** colour lithograph by John Gould
- 6710 **Phaeoptila Sordida (Humming Bird Series)** colour lithograph by John Gould
- 6711 **Eucephala Caeruleo-Lavata (Humming Bird Series)** colour lithograph John Gould
- 6712 **Hypurotila Urocherysia (Humming Bird Series)** colour lithograph by John Gould
- 6733 **The North West Prospect of the City of Gloucester** coloured engraving by Samuel and Nathaniel Buck
- 8222 **Gondola II** 55/100 etching and aquatint by Margret Kroch-Frishman
- 8520 **A New Map of Ireland** coloured engraving by Hermann Moll
- 10915 **Woburn** lithograph by Edwin La Dell
- 13528 **Woman and Cat Sleeping at a Table** watercolour by Neil Shawcross
- 13529 **Moonlight and Breaker** acrylic on board by Lawson Burch
- 13656 **Balanced Battle** screenprint by Alan Oram
- 13670 **Room with Chair** screenprint by James Allen
- 13677 **Clown and Cat** painting by George Campbell
- 15524 **King George V (1865-1936) Reigned 1910-36** painting after Sir Samuel Luke Fildes
- 15525 **Mary of Teck (1867-1953) Queen Consort of King George V** painting after William Llewellyn
- 15531 **Coronation of H M George IV: The Recognition 1821** coloured engraving by James Stephanoff, Matthew Dubourg

Historic Royal Palaces: Kensington Palace

- 2526 **King William III (1650-1702) on Horseback** painting by Jan Wyck

Historic Royal Palaces: Tower of London

- 5688 **The Tower** coloured aquatint Thomas Malton jnr
- 5689 **The Great Court of the Tower** coloured aquatint by Thomas Malton jnr
- 5690 **The South View of the Tower of London** coloured engraving by Samuel and Nathaniel Buck
- 5691 **The West View of the Tower of London** coloured engraving by Samuel and Nathaniel Buck
- 5693 **A True and Exact Draught of the Tower Liberties, Surveyed in the Year 1597** coloured engraving by William Hayward and Joel Gascoyne
- 7125 **View of the Tower of London** coloured aquatint by Daniell Havell after John Gendall
- 7127 **Tower of London and Tower Bridge** drawing by P R Perry
- 14791 **Yeoman Warders of the Tower of London in Full Uniform** lithograph by Renniard

The Honorable Society of King's Inns, Dublin, Ireland

- 0/128 **High Treason, Court of Criminal Appeal: the Trial of Sir Roger Casement, 1916** 1916 painting by Sir John Lavery

Morden College, Blackheath

- 8183 **Morden College, Blackheath** 1884 painting by Henry Ashby Binckes

National Gallery, London

- 14990 **Room 32 in the National Gallery, London** 1886 painting by Giuseppe Gabrielli

The National Horseracing Museum

- 3423 **The Essex Hunt** painting by (Charles) Dean, the younger Wolstenholme
 5650 **Fishing: Portrait of the Artist by a River** 1871 painting by Henry Leonidas Rolfe

National Trust: Attingham Park

- 11043 **View of Attingham Hall, Shropshire** 1792 drawing by Moses Griffith

National Trust: Morville Hall

- 10663 **Morville Hall, Shropshire** painting by an unknown artist, British 18th century
 11040 **Morville Hall, Shropshire** 1794 drawing by Moses Griffith

Organisation for Economic Cooperation and Development (OECD), Paris

- 18098 **Bach... Six Suites for the Solo Cello** 2006 by Idris Khan

Parliamentary Art Collection

- 0/24 **Spencer Perceval (1762-1812) Prime Minister** 1816 painting by George Francis Joseph
 0/116 **Sir Robert Peel, 2nd Baronet (1788-1850) Prime Minister** painting by Robert Richard Scanlan
 0/785 **Queen Victoria (1819-1901) Reigned 1837-1901** 1876 painting by James Sant
 6314 **Whitehall in Roman Times** 1963 drawing by H J M Green
 6315 **Whitehall in Saxon Times** 1963 drawing by H J M Green
 6316 **Whitehall in Mediaeval Times** 1963 drawing by H J M Green
 6317 **Whitehall in C.1600** 1963 drawing by H J M Green
 7008 **Coal Exchange** lithograph by Edward Bawden
 13565 **The Lying in State of Gladstone, Westminster Hall, 27 May 1898** 27 May 1898 drawing by Robert Taylor Pritchett
 13566 **The Funeral of Gladstone: the Coffin arriving outside the Abbey, 28 May 1898** 28 May 1898 drawing by Robert Taylor Pritchett
 13567 **The Funeral of Gladstone: the Coffin Passing Choirscreens, 28 May 1898** 28 May 1898 drawing by Robert Taylor Pritchett
 14430 **James Harold Wilson, Baron Wilson of Rievaulx (1916-1995) Prime Minister** painting by Ruskin Spear
 17636 **The Queen's Garden** lithograph by Edward Bawden
 18113/1 **Untitled (1)** 2007 by Marc Quinn
 18113/2 **Untitled (2)** 2007 by Marc Quinn
 18113/3 **Untitled (3)** 2007 by Marc Quinn
 18113/4 **Untitled (4)** 2007 by Marc Quinn
 18113/5 **Untitled (5)** 2007 by Marc Quinn
 18113/6 **Untitled (6)** 2007 by Marc Quinn
 18113/7 **Untitled (7)** 2007 by Marc Quinn
 18113/8 **Untitled (8)** 2007 by Marc Quinn

Pembroke College, Cambridge

- 17326 **Fathom May** 1998 sculpture by Bill Woodrow

HRH The Prince of Wales' Household, Llwynwermud, Wales

- 8995 **The Investiture of the Prince of Wales, July 1969** painting by Thomas Rathmell
 14387 **Design for the Investiture of the Prince of Wales, Caernarfon Castle: Water Gate Entrance, Sketch** 1969 drawing by Carl Toms
 14388 **Design for the Investiture of the Prince of Wales, Caernarfon Castle: Water Gate Entrance, Sketch 2** 1969 drawing by Carl Toms
 14389 **Design for the Investiture of the Prince of Wales, Caernarfon Castle: Sketch Design for Dais, Canopy and Thrones** 1969 drawing by Carl Toms
 14390 **Design for the Investiture of the Prince of Wales, Caernarfon Castle: King's Gate Entrance** 1969 drawing by Carl Toms
 14391 **Design for the Investiture of the Prince of Wales, Caernarfon Castle: Queen Eleanor's Gate** 1969 drawing by Carl Toms
 14392 **Design for the Investiture of the Prince of Wales, Caernarfon Castle: Prince of Wales Coat of Arms** 1969 drawing by Carl Toms

- 14393 **Design for the Investiture of the Prince of Wales, Caernarfon Castle: Prince of Wales Feathers** 1969 drawing by Carl Toms
- 14394 **Design for the Investiture of the Prince of Wales, Caernarfon Castle: Welsh Dragon Design for Central Throne** 1969 drawing by Carl Toms
- 14395 **Design for the Investiture of the Prince of Wales, Caernarfon Castle: Sketch Design for Welsh Dragon** 1969 drawing by Carl Toms
- 14396 **Design for the Investiture of the Prince of Wales, Caernarfon Castle: Design for Orchestra Staging and Canopy** 1969 drawing by Carl Toms
- 14397 **Investiture 1969: Prince of Wales' Robing Room** 1968 drawing by John Pound
- 14398 **Investiture 1969: Initial Sketch for General Seating** 1969 drawing by John Pound
- 14399 **Investiture 1969: Initial Sketch for General Seating** 1969 drawing by John Pound
- 14400 **Investiture 1969: Initial Sketch for General Seating** 1969 drawing by John Pound
- 14401 **Investiture 1969: Initial Sketch for General Seating** 1969 drawing by John Pound

Queen Mary's School, Thirsk, North Yorkshire

- 0/786 **King George V (1865-1936) Reigned 1910-36** painting after Sir Samuel Luke Fildes
- 0/787 **Mary of Teck (1867-1953) Queen Consort of King George V** painting after William Llewellyn

RAF College, Cranwell

- 4996 **Hugh Montague Trenchard, 1st Viscount Trenchard (1873-1956) Marshal of the Royal Air Force** 1959 painting after Sir Oswald Birley
- 0/767 **King George V (1865-1936) Reigned 1910-36** 1912-1935 painting after Sir Samuel Luke Fildes
- 0/768 **Mary of Teck (1867-1953) Queen Consort of King George V** painting after William Llewellyn
- 15503 **King George VI (1895-1952) Reigned 1936-52** published 1946 by Sir Gerald Festus Kelly
- 15504 **Elizabeth, Queen of King George VI, The Queen Mother (1900-2002)** published 1946 by Sir Gerald Festus Kelly
- 17765 **King George VI (1895-1952) Reigned 1936-52** Published 1946 by Sir Gerald Festus Kelly
- 17766 **Elizabeth, Queen of King George VI, The Queen Mother (1900-2002)** Published 1946 by Sir Gerald Festus Kelly

Royal Armouries: Leeds

- 2622 **Charles Powlett, 3rd Duke of Bolton and 8th Marquess of Winchester (1685-1754)** c.1740 painting by James Seymour

Royal Armouries: Tower of London

- 45 **Elevation of the South Front of the Grand Storehouse at the Tower** c.1710 drawing by John Hanway
- 11692 **Chapel in the White Tower** drawing by Frederick Nash
- 11693 **View under Bloody Tower** drawing by Frederick Nash
- 11694 **Plan of the White Tower, Dungeon Floor** drawing by Frederick Nash
- 11695 **Dungeon or Prison Room in White Tower** drawing by Frederick Nash
- 11696 **Inscriptions in the Prison Room of the White Tower** drawing by Frederick Nash
- 11697 **Plan of the White Tower, Chapel Floor** drawing by Frederick Nash
- 11698 **State Room in the Upper Storey of White Tower** drawing by Frederick Nash
- 11699 **Inside of the Chapel** drawing by Frederick Nash
- 11700 **Tomb in the Chapel** drawing by Frederick Nash
- 11701 **Plan of Prison Room in Beauchamp Tower** drawing by Frederick Nash
- 11702 **Prison Room in Beauchamp Tower** drawing by Frederick Nash
- 11703 **Inscription in the Prison Room, Beauchamp Tower** drawing by Frederick Nash
- 11704 **Inscriptions in the Prison Room Beauchamp Tower** drawing by Frederick Nash
- 11705 **Inscriptions in the Prison Room Beauchamp Tower** drawing by Frederick Nash
- 11706 **Inscriptions in the Prison Room Beauchamp Tower** drawing by Frederick Nash
- 11707 **Inscriptions in the Prison Room Beauchamp Tower** drawing by Frederick Nash
- 11708 **In the Upper Prison Room, Beauchamp Tower** drawing by Frederick Nash
- 11709 **Inscriptions in the Prison Room Beauchamp Tower** drawing by Frederick Nash
- 11710 **Beauchamp Tower from Tower Hill** drawing by Frederick Nash

- 11711 **Inscription in Salt Tower** drawing by Frederick Nash
 11712 **Inside of Bowyers Tower** drawing by Frederick Nash
 11713 **Bloody Tower** drawing by Frederick Nash
 11714 **Entrance under Bloody Tower** drawing by Frederick Nash
 11715 **Inside of Well Tower** drawing by Frederick Nash
 11716 **Byward Tower** drawing by Frederick Nash
 11717 **Inside of Byward Tower** drawing by Frederick Nash
 11718A **Inscriptions in the Prison Room Beauchamp Tower** drawing by Frederick Nash
 11718B **Inscriptions in the Prison Room Beauchamp Tower** drawing by Frederick Nash

The Royal Hospital, Chelsea, London

- 0/15 **Coat of Arms of King Charles II 1671-1685** painting by British 17th century unknown
 0/49 **King James II and VII (1633-1701) Reigned 1685-8, as Duke of York** painting by John Riley
 0/634 **Sir Samuel Butler Provis (1845-1927) Permanent Secretary, Local Government Board 1900-1910** 1910 painting by John Collier
 0/809 **King Edward VII (1841-1910) Reigned 1901-10** painting after Sir Samuel Luke Fildes
 0/810 **Alexandra of Denmark (1844-1925) Queen Consort of King Edward VII** painting after Sir Samuel Luke Fildes
 500 **Prospect of the Cathedral Church of St Paul's, London** c.1720 coloured engraving by A de Putter
 743 **Entry to the Strand from Charing Cross** 1842 lithograph by Thomas Shotton Boys
 1293 **King Charles II (1630-85) Reigned 1660-85** c.1675 painting after Sir Peter Lely
 1749 **Mounted Soldier** drawing by Orlando Norie
 1750 **Mounted Soldier** drawing by Orlando Norie
 2770 **Board of Trade, Whitehall, etc. from Downing Street** 1842 lithograph by Thomas Shotton Boys
 2800 **Jonathan Swift (1667-1745) Author & Satirist** c.1740 painting by Francis, (studio) Bindon
 5846 **View of London from near the Adelphi** published 13 March 1815 aquatint by Henry Haseler; Daniell Havell
 5847 **View of London from the Queens' Palace** published 1 May 1816 aquatint by Henry Haseler; Daniell Havell
 5956 **Greenwich Hospital** published 1828 aquatint by Samuel Owen; Richard Gilson Reeve
 5965 **A View from Richmond Hill up the River** published 13 February 1749 coloured engraving by Antonio Jolli; Francois Vivares
 5966 **A View of Richmond Palace fronting the Green, as built by King Henry VIII** published 30 December 1765 coloured engraving by James, I Basire
 5967 **View up the Thames between Richmond & Isleworth** coloured engraving by John Boydell
 6401 **Chelsea with Part of the Old Church & Sir Hans Sloane's Tomb** published October 1840 lithograph by William Parrott
 10377 **A Survey of London, by Party of Tarry-at-Home Travellers** c.1820 engraving by British 19th century unknown
 11051 **Royal Hospital, Chelsea** c1800 drawing by Hubert Cornish
 18635 **King George V (1865-1936) Reigned 1910-36** 1912-1935 painting after Sir Samuel Luke Fildes
 18645 **Elevation of Marlborough House to St. James's Park** published 1715 engraving by Colen Campbell

Royal Institute of International Affairs, Chatham House

- 975 **Claybury Hall, Essex** painting by Abraham Pether
 1544 **Monument to William Pitt, 1st Earl of Chatham (1708-1778) Prime Minister in Westminster Abbey** mezzotint by Valentine Green after Johann Gerhard Huck

Royal Military Academy, Sandhurst

- 0/678 **King Edward VII (1841-1910) Reigned 1901-10** painting after Sir Samuel Luke Fildes
 0/679 **Alexandra of Denmark (1844-1925) Queen Consort of King Edward VII** painting after Sir Samuel Luke Fildes

The Royal Mint Museum, Pontyclun

- 2515 **Royal Mint** 1953 by Dennis Flanders
 5984 **The Queen's Shilling** by John Collier
 6732 **Sir Isaac Newton (1642-1727) natural philosopher and mathematician** after Sir Godfrey Kneller

- 8078 **Sir James William Morrison (1774-1856) Deputy Master of the Royal Mint 1830-50** by George Clint
 11955 **A True & Exact Draught of the Tower Liberties Survey'd in the Year 1597** by **Gulielmus Haiward and J Gascoyne 1742** by William Hayward
 15882 **Lady Louisa Jane Grace Atkinson (née Gill or Gyll) (b.1800) c.1829-1830** by British 19th century unknown
 15883 **Sir Jasper Atkinson (1790-1856) Provost of the Royal Mint, with his daughter Jane Laura (b.1820) 1824** by Charles Harding

Supreme Court of New Zealand, Wellington, New Zealand

- DM16 **Queen Anne Silver Treasury Inkstand 1702-03** maker: Philip Rollos

University of Wales, Trinity St. David

- 16804 **Brian Robert Morris, Lord Morris of Castle Morris (1930-2001) literary scholar, arts administrator and politician 1992** painting by Paul Brason

Victoria & Albert Museum: The British Galleries

- 273 **Francis Hastings, 10th Earl of Huntingdon (1729-1789) courtier and diplomat 1761** marble bust by Joseph Wilton
 4959 **View of Longleat 1678** painting by Jan Siberechts
 15470 **Queen Victoria (1819-1901) Reigned 1837-1901** painting by Henry Macbeth-Raeburn after Heinrich von Angeli

Victoria & Albert Museum: The Silver Galleries

- DM47 **Pair of William and Mary Silver Candle Snuffers 1693** unknown maker
 DM48 **William and Mary Silver Snuffer Tray 1693** unknown maker
 DM49 **Pair of William and Mary Silver Candle Snuffers** unknown maker
 DM50 **James II Silver Snuffer Tray 1685** unknown maker
 DM51 **James II Silver Snuffer Tray** unknown maker
 DM52 **William and Mary Silver Snuffer Tray** unknown maker
 DM53 **Pair of Queen Anne Silver Candle Snuffers 1707** maker: Joseph Bird
 DM54 **Pair of Queen Anne Silver Candle Snuffers 1707** maker: Joseph Bird

White House Office of the Curator, Washington D.C.

- 16203 **Sir Winston Leonard Spencer Churchill (1874-1965) Prime Minister 1947** by Sir Jacob Epstein

Advisory Committee members

Sir David Verey CBE Chairman

Ex Officio

Gabriele Finaldi	Ex Officio – Director, National Gallery
Dr Nicholas Cullinan	Ex Officio – Director, National Portrait Gallery
Alex Farquharson	Ex Officio – Director, Tate Britain
Clare Pillman	Ex Officio – Director, Culture, DCMS
Penny Johnson CBE	Ex Officio – Director, Government Art Collection

Independent

David A. Bailey MBE	Independent - Director of ICF International Curators Forum
Dr Andrew Renton	Independent - Professor of Curating - Goldsmiths', University of London
Susan Collins	Independent - Artist and Director of the Slade School of Fine Art, University College London
Iwona Blazwick OBE	Independent - Director, Whitechapel Art Gallery
Clare Lilley	Independent - Director of Programme at Yorkshire Sculpture Park

GAC staff

Penny Johnson CBE	Director & Head of Division
Funmi Ohuruogu-Jele	PA to the Director
Adrian George	Deputy Director & Senior Curator
Andrew Parratt	Curator: Collection Services
Jane Fisher	Registrar
Nicole Simoes da Silva	Registrar
Roger Golding	Curator: Documentation
Clive Marks	Senior Administrator
Chris Christophorou	Collection Technician
Martin Few	Collection Technician
Chantal Condron	Curator: Information & Research - (Modern & Contemporary - part-time)
Nicky Hodge	Curator: Information & Research - (Modern & Contemporary - part-time)
Dr Laura Popoviciu	Curator: Information & Research - (Historical)
Tony Harris	Digital Media & Photography Officer

Queen's Yard
179a Tottenham Court Road,
London, W1T 7PA.

www.gac.culture.gov.uk

© Crown Copyright, 2018

**Government
Art Collection**



Department for
Digital, Culture,
Media & Sport